

Product Environmental Report

Galaxy S26+

2026.02.25



At Samsung, we work to embed eco-conscious technology and innovation in all of our products. By considering sustainability throughout the product life cycle, we aim to inspire our customers to join us in our journey of building a better tomorrow.

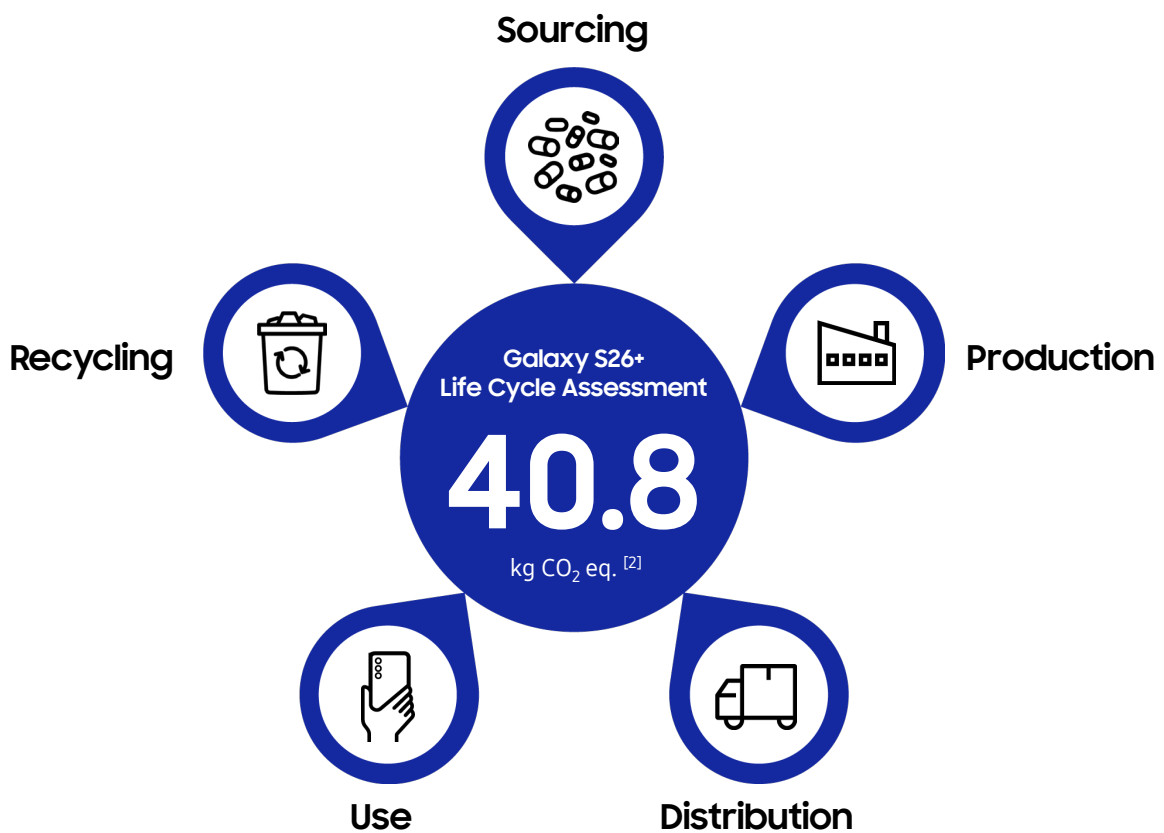


* UL certified only for the US configuration. ^[1]

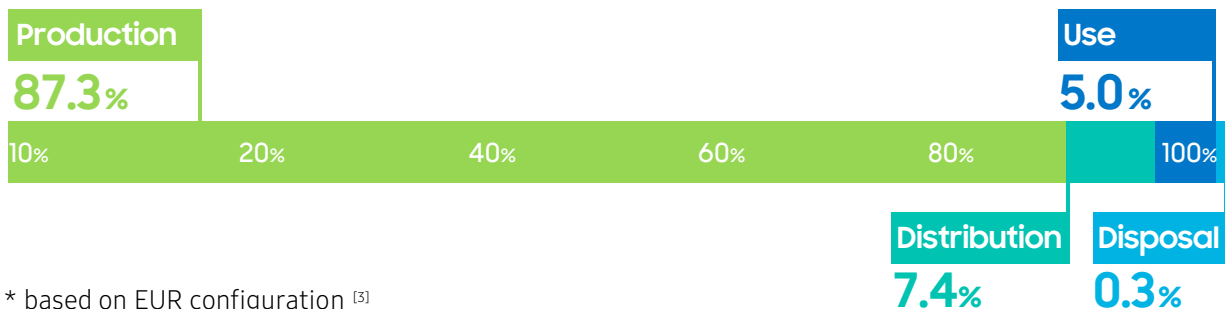
Product Carbon Footprint

To understand the environmental impacts of our products, at Samsung Electronics, we assess a product's entire life cycle, including the sourcing, production, distribution, product use and recycling phases.

At the production stage, we are aiming to expand the development and application of recycled materials with a lower carbon footprint. At the distribution stage, we are working to minimize packaging volume and weight to reduce carbon emissions. Through initiatives like improving the energy efficiency of chargers, we are trying to improve the environmental impact at the use stage.

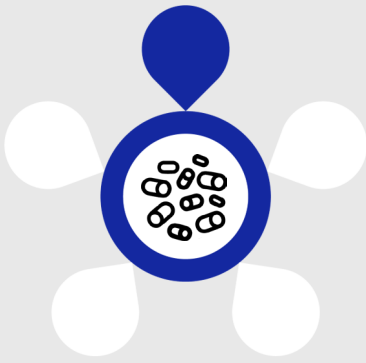


Galaxy S26+ life cycle carbon emissions



* based on EUR configuration ^[3]

Sourcing ^[4]



Across the product lifecycle, from raw material sourcing to disposal and recycling, we are continuing our efforts to create a circular economy.

To build toward a circular system, we are using recycled materials and collecting e-waste to extract materials for reuse. By 2030, we aim for 50% of the plastic used in our DX products to incorporate recycled resin. By 2050, we anticipate this figure to increase to 100%.

The Galaxy S26+ contains more than 17.8% recycled content. The Galaxy S26+ has newly introduced recycled tantalum. We are making continuous efforts to expand the application of more diverse recycled materials to our products.



Plastic

Plastic in the front case contains 10% recycled plastic.



Aluminum

Armor Aluminum in the front case contains 20% recycled material.



Glass

The front and back glass contain at least 10% recycled glass.



Rare Earth Elements

Magnets in the speakers are made of 100% recycled rare earth elements.



Steel

Steel in the speaker modules contains at least 40% recycled steel.



Copper

Copper foil of main logic boards contains 100% recycled copper.



Gold

Bonding wire in the front camera module contains 100% recycled gold.



Cobalt

Cobalt in the battery is 50% recycled cobalt.



Tantalum

Tantalum in certain capacitors contains 15% recycled tantalum.



Chemical Mgmt.

To prevent hazardous substances from entering our products, we inspect manufactured parts and raw materials rigorously through our chemical management system.

Our Standards for the Control of Substances Used in Products^[5] are based on global regulations and standards, and we voluntarily established reduction plans for the use of potentially hazardous substances, such as polyvinyl chloride(PVC), brominated flame retardants(BFRs), beryllium, and antimony, as well as legally regulated substances.

Production



We are expanding the use of renewable energy at our business sites around the world.

Energy infrastructure and regulations, which vary widely by jurisdiction, require region-specific transition plans.



Renewable Energy

Safety and health certification (ISO) at our production sites

100%

We plan to run all operations of the DX(Device eXperience) Division on renewable energy by 2027. ^[6]

All of our business sites where Galaxy S26+ is produced have attained ISO14001(environmental management system) and ISO50001(energy management system) certifications. ^[7]

We achieved highest Platinum grade for Zero Waste to Landfill validated by global safety science company, UL(Underwriters Laboratories), across all our global manufacturing sites in 2025. ^[8]



Distribution



To reduce the environmental impact of our product packaging, we are replacing plastic packaging and protective films with paper and recycled materials to the extent possible.

We are also reducing the volume and weight of packaging to mitigate Greenhouse Gas emissions in the transportation and shipping process.



Eco Packaging

Recycled paper

100%

We removed single-use plastics from the Galaxy S26+ product packaging.^[9] Since 2017, we had been exploring ways to eliminate single-use plastics in packaging by assessing every aspect of packaging design, down to the smallest details.^[10]

Paper used for the Galaxy S26+ packaging box is 100% recycled paper.^[11]



Use



Environmental experts participate throughout product development at Samsung Electronics so that our customers can more sustainably use our devices.

During the product development phase, our stress tests help ensure the longevity and consistent performance of our products. This enables users to enjoy our products for longer periods of time.



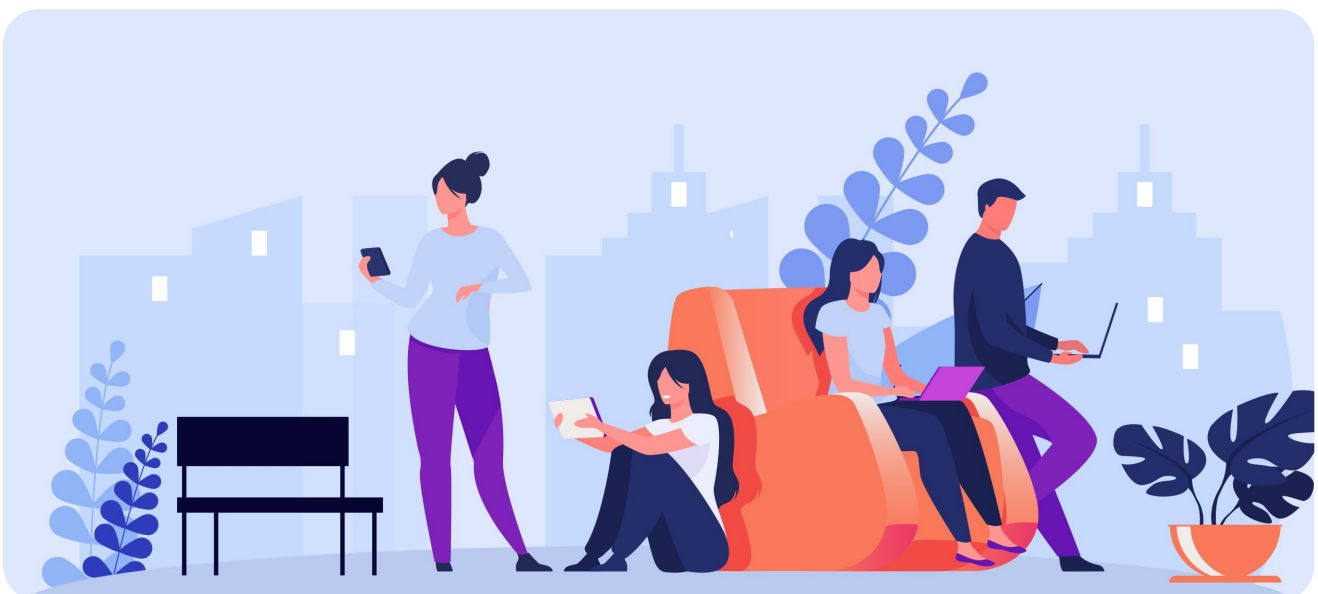
Repair & Reuse

Security Update & OS Upgrade ^[12]

7 yrs & 7 gens

Repairability is one of our main priorities in product development. Starting from the US in 2022, we have continued to expand our Self-Repair program to increase access to repair options for Galaxy users. ^[13]

Galaxy S26+ has IP68 ^[14] water resistance and dust protection, and we provide seven generations of OS upgrades and seven years of security updates from the global launch date.



Recycling



To promote the circular economy and a low-carbon society, we are expanding responsible recycling globally.

Samsung's local recycling programs provide collection services tailored to each region for customers disposing e-waste, and we take back all electrical and electronic waste regardless of product brand.



Collection

Samsung Electronics operates a range of recycling programs in over 100 countries, including Korea, to collect e-waste regardless of brand. By 2030, we plan to expand e-waste collection system to all countries where our products are sold.

Collected electronic goods are sorted, pre-processed, and shredded to be recycled as materials. Some of the materials like plastic are used for new product manufacturing. We also internally operate Requirements for Recycling Service Partners that specify requirements such as compliance obligations related to EHS-related laws and regulations, supplier management, and prohibition of illegal waste exportation.



Endnotes

1. Galaxy S26+ devices sold, distributed, and/or produced for the US market have received UL ECOLOGO Certification in accordance with UL110 Standard for Sustainability for Mobile Phones.
<https://www.ul.com/el>
2. Samsung Electronics calculates product carbon emissions through its self-developed LCA system, which has been verified for conformity by the third-party certification body in accordance with the international standard below. Based on the results, Samsung Electronics continues to make efforts in the product development stage to improve the environmental characteristics of the product.
 - ISO 14040:2006
Life cycle assessment - Principles and framework
 - ISO 14044:2006
Life cycle assessment - Requirements and guidelines
 - ISO 14067:2018
Greenhouse gases - Carbon footprint of products - Requirements and guidelines for quantification
3. System boundary of Life Cycle Assessment
 - Production : Pre-manufacturing(Parts and materials constituting the products and its transportation) and Product assembly by Samsung Electronics
 - Distribution : From Vietnam to EUR
 - Use : 3 years use
 - Disposal : Waste treatment of parts and material
4. The content of all recycled materials shown here is a third-party verification figure based on ISO 14021 and the content was measured on a weight basis.
5. Standards for the Control of Substances Used in Products
<https://www.samsung.com/global/sustainability/digital-library/policy-document/>
6. Samsung Electronics joined RE100, a global initiative to reduce indirect carbon emissions from power usage(Scope 2), and is pursuing the transition of used electricity to renewable energy by 2050. Samsung Electronics aims to achieve transition 100% renewable energy at all overseas operations and DX Division by 2027. As of 2023, DX Division's operations in the US, China, Europe, South Korea, Vietnam, India, and Brazil have reached this target, we are planning to expand direct power purchase agreements(PPAs) centering on the regions equipped with active renewable energy policies and systems.
※ The DX Division produces and sells finished products such as TVs, monitors, refrigerators, washing machines, air conditioners, smartphones, tablets, computers and wearables.
<https://www.samsung.com/global/sustainability/planet/climate-action/#anchor2>
7. Samsung Electronics' manufacturing sites operate environmental management and energy management systems based on global standards including ISO14001 and ISO50001 certifications. We also strive to ensure that our suppliers have robust occupational health and safety management systems in place by encouraging them to attain certification for international standards and reflect related outcomes in the comprehensive supplier evaluations.
8. UL issues Zero Waste to Landfill designations based on a facility's waste diversion rate, Platinum(100%), Gold(95-99%), and Silver(90-94%). Facilities that achieve diversion rate less than 90% and above 80% can still qualify for a certified landfill diversion claim. (As a rate with fractional value is rounded off by UL, 99.5% will be rounded off to 100%)
9. In select markets, limited use of shrink vinyl or sealing labels remains due to local conditions. Some legacy packaging materials produced prior to the transition may also still be in distribution.

Endnotes

10. History of Galaxy S Eco-Conscious Packaging

<https://news.samsung.com/us/infographic-history-of-galaxy-s-eco-conscious-packaging/>

11. 100% recycled paper was applied to the product package unit box, excluding the internal pulp tray, cover protector, sealing label and shrink vinyl.

12. Availability and timing of Android OS upgrades and security updates may vary by device model and market.

13. Model availability, components, kit cost differs by region.

14. Based on lab test conditions for submersion in up to 1.5 meters of freshwater for up to 30 minutes. Not advised for beach or pool use. Water and dust resistance of device is not permanent and may diminish over time because of normal wear and tear.

Corporate Sustainability Management

Samsung is constantly striving to deliver innovative products and services across the value chain. This is rooted in our core values in economy, society and environment. Therefore, we monitor the financial and non-financial impacts that we exert on society in order to maximize our positive impacts while minimizing any negative ones.

<https://www.samsung.com/global/sustainability/main/>

Environmental Strategy

Samsung announced the New Environmental Strategy in September 2022 with the aim of addressing global environmental issues through our innovative technologies. This paradigm shift is essential for our sustainable growth and will create meaningful momentum to reinforce our competitiveness.

The New Environmental Strategy was developed based on our commitment to achieve net zero in DX division by 2030, and DS division by 2050, joining the world's effort to combat climate change, maximize resource circularity to advance towards a circular economy, and continuously address environmental challenges with technological innovation. This effort is expected to bring positive change to the broader ecosystem of the ICT industry as we engage in the manufacturing and supply of an extensive range of products and services.

<https://www.samsung.com/global/sustainability/planet/environmental-strategy/>

Circular Economy

Samsung aims to manage resources more sustainably by using recycled materials and researching methods to extract and re-use resources from e-waste.

<https://www.samsung.com/global/sustainability/planet/circular-economy/>